

The Samsung logo, consisting of the word "SAMSUNG" in white, uppercase letters inside a blue oval shape.

SAMSUNG

GT-B9150

User Manual

About this manual

- Please read this manual before using the device to ensure safe and proper use.
- Images and screenshots may differ in appearance from the actual product.
- Content may differ from the final product, or from software provided by service providers or carriers, and is subject to change without prior notice. For the latest version of the manual, refer to the Samsung website, www.samsung.com/hk.
- Content (high quality content) that requires high CPU and RAM usage will affect the overall performance of the device. Applications related to the content may not work properly depending on the device's specifications and the environment that it is used in.
- Default applications that come with the device are subject to updates and may no longer be supported without prior notice. If you have questions about an application provided with the device, contact a Samsung Service Centre. For user-installed applications, contact service providers.
- The content may differ from the operating system of the user's computer.
- The device has similar functions to those on personal computers, but some features are different and not supported.
- Applications and their functions may vary by country, region, or hardware specifications. Samsung is not liable for performance issues caused by applications from any provider other than Samsung.
- Modifying the device's operating system or installing softwares from unofficial sources may result in device malfunctions and data corruption or loss. These actions are violations of your Samsung licence agreement and will void your warranty.
- The device can be upgraded to the latest software. For more information, refer to the Samsung website.
- Software, sound sources, wallpapers, images, and other media provided with this device are licensed for limited use. Extracting and using these materials for commercial or other purposes is an infringement of copyright laws. Users are entirely responsible for illegal use of media.

Instructional icons



Warning: situations that could cause injury to yourself or others



Caution: situations that could cause damage to your device or other equipment



Note: notes, usage tips, or additional information

Copyright

Copyright © 2013 Samsung Electronics

This guide is protected under international copyright laws. No part of this guide may be reproduced, distributed, translated, or transmitted in any form or by any means, electronic or mechanical, including photocopying, recording, or storing in any information storage and retrieval system, without the prior written permission of Samsung Electronics.

Trademarks

- SAMSUNG and the SAMSUNG logo are registered trademarks of Samsung Electronics.
- The Android logo, Google™, YouTube™, Google Play™ Store, Google Play™ Movies, and Google Play™ Music are trademarks of Google, Inc.
- Bluetooth® is a registered trademark of Bluetooth SIG, Inc. worldwide.
- HDMI, the HDMI logo and the term “High Definition Multimedia Interface” are trademarks or registered trademarks of HDMI Licensing LLC.

- Wi-Fi[®], Wi-Fi Protected Setup[™], Wi-Fi Direct[™], Wi-Fi CERTIFIED[™], and the Wi-Fi logo are registered trademarks of the Wi-Fi Alliance.
- All other trademarks and copyrights are the property of their respective owners.

DivX[®], DivX Certified[®] and associated logos are trademarks of Rovi Corporation or its subsidiaries and are used under licence.



ABOUT DIVX VIDEO

DivX[®] is a digital video format created by DivX, LLC, a subsidiary of Rovi Corporation. This is an official DivX Certified[®] device that has passed rigorous testing to verify that it plays DivX video. Visit www.divx.com for more information and software tools to convert your files into DivX videos.

ABOUT DIVX VIDEO-ON-DEMAND

This DivX Certified[®] device must be registered in order to play purchased DivX Video-on-Demand (VOD) movies. To obtain your registration code, locate the DivX VOD section in your device setup menu. Go to vod.divx.com for more information on how to complete your registration.

DivX Certified[®] to play DivX[®] video up to HD 720p, including premium content.

Table of Contents

Getting started

- 7 Key features
- 7 Device layout and function
- 9 Package contents
- 9 Installation
- 11 Turning on the device
- 12 Connecting to a smartphone
- 13 Connecting to audio equipment
- 14 Resetting the device

Basics

- 15 Controlling a screen
- 19 Entering text
- 19 Home screen
- 20 Opening an application
- 21 Applications screen
- 22 Setting up accounts
- 22 Notifications
- 23 Transferring files
- 24 Setting up user profiles
- 25 Backing up or restoring data
- 26 Connecting to a Wi-Fi network

Web & network

- 27 Internet
- 29 Screen Mirroring

Media

- 30 Music Player
- 31 Gallery
- 32 Video Player
- 33 YouTube

Application & media stores

- 34 Play Store
- 35 Samsung Apps

Utilities

- 36 POLARIS Office
- 37 Google
- 38 My Files
- 38 Downloads
- 38 McAfee VirusScan

Settings

39	About Settings
39	Wi-Fi
40	Bluetooth
40	Ethernet
40	Nearby devices
40	Play nearby device content
41	Sound
41	Display
41	Storage
41	Application manager
42	Location services
42	Lock screen
42	Member management
43	Security
43	Language and input
46	Content backup and restoration
46	Backup and reset
46	Add account
46	Mouseover
46	Audio output
47	Date and time
47	Accessibility
47	About device

Appendix

48	Upgrading the device
50	Troubleshooting

Safety information

Getting started

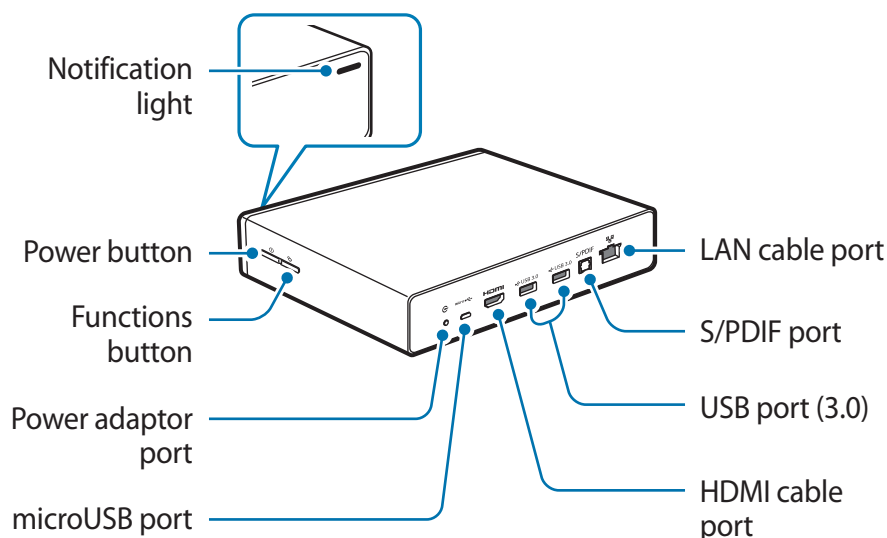
Use this device to play multimedia files on large screens that support the High Definition Multimedia Interface (HDMI). You can also save and share files with family members via the Home cloud storage. Install **HomeSync** application on your smartphone to upload and download content, add and manage multiple user accounts, use it as a remote control for the screen (TV or monitor), and more.

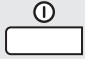

Key features

The device's key features include:

- Home cloud service with mass storage
- Multiple user management
- Easy setup with the NFC feature
- Automatic uploading
- Media playback on large screens
- Screen mirroring
- Easy control with **HomeSync** application

Device layout and function



Name	Function
 Power button	<ul style="list-style-type: none"> • Press and hold to turn the device on or off. • Press and hold for more than 8 seconds to reset the device.
 Functions button	<ul style="list-style-type: none"> • Press to confirm secure pairing with your smartphone. • Press and hold for a few seconds to capture a screenshot.
Power adaptor port	<ul style="list-style-type: none"> • Connect a power cable to supply power.
microUSB port	<ul style="list-style-type: none"> • Connect to a computer using a microUSB cable.
HDMI cable port	<ul style="list-style-type: none"> • Connect to a monitor (TV or computer) using an HDMI cable.
USB port (3.0)	<ul style="list-style-type: none"> • Connect to a compatible device, such as a smartphone or camera, or an external USB storage device using a USB cable. • Connect to a keyboard or mouse using a USB cable.
S/PDIF port	<ul style="list-style-type: none"> • Connect to audio equipment using an S/PDIF cable.
LAN cable port	<ul style="list-style-type: none"> • Connect to a network using a LAN cable.



Some items, including monitors, smartphones, and peripherals may not be compatible with the device.

Notification light

The notification light alerts you to the device's status with the following colours.

Colour	Status
Blue (steady)	<ul style="list-style-type: none"> • Network connected • Ready to download or upload data
Green (steady)	<ul style="list-style-type: none"> • Upcoming events • Application being updated
Red (blinking)	<ul style="list-style-type: none"> • Failed to recognise internal hard disk drive (HDD)
Yellow (steady)	<ul style="list-style-type: none"> • Network connection error

Package contents

Check the product box for the following items.

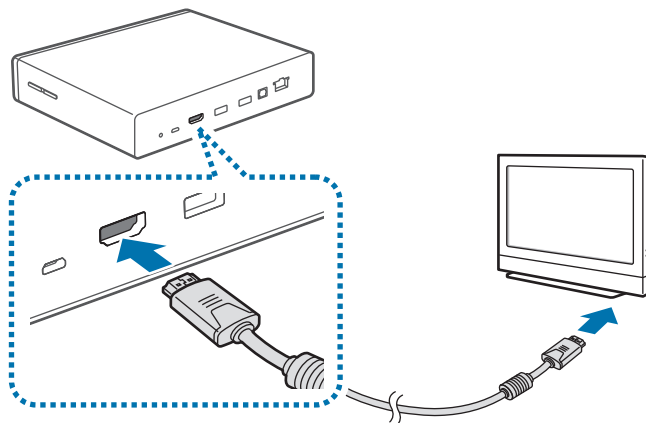
- Device
- Power adaptor/Power cord
- LAN cable
- HDMI cable (A-to-A)



- The items supplied with the device may vary depending on the region or service provider.
- You can purchase additional accessories: USB cable, S/PDIF cable, and microUSB cable.
- Make sure they are compatible with the device before purchase.

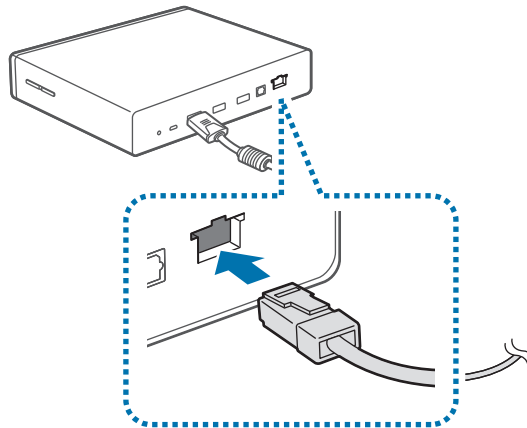
Installation

- 1 Connect the device to a monitor that supports the High Definition Multimedia Interface (HDMI) using the HDMI cable.



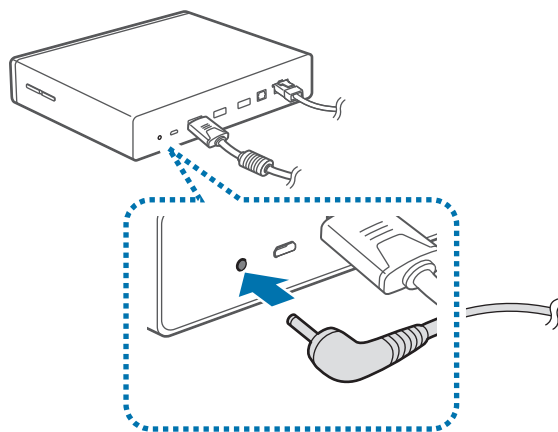
For more information, refer to the user manual for the monitor.

2 Connect a LAN cable to the LAN cable port on the device to connect to a network.



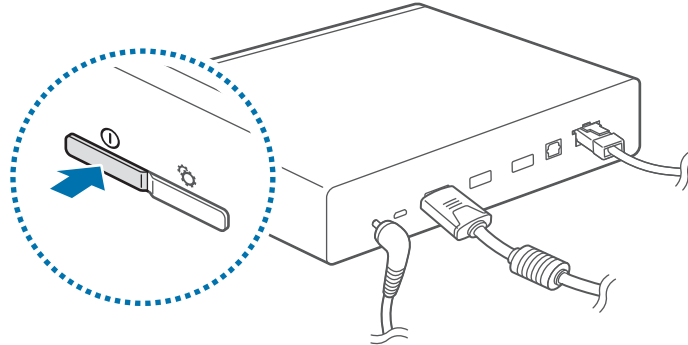
- To set the static IP, access **Settings** → **Ethernet** → **Configure Ethernet device**.
- You can let the device connect automatically to the Wi-Fi network your smartphone uses, or you can connect to a Wi-Fi network by accessing **Settings** → **Wi-Fi**. However, to establish a better connection, it is recommended to use the LAN cable.

3 Connect the power adaptor to the device, and then connect the power cord to the electrical socket.



Turning on the device

- 1 Press and hold the Power button to turn on the device.



- 2 Turn on the connected monitor.



For better picture quality, follow the on-screen instructions when setting up the device for the first time and select a screen aspect ratio to fit the original screen. Or, access **Settings** → **Display** → **Screen size**.

Turning off the device

To turn off the device, press and hold the Power button, and then press and hold the Power button again or select **OK**.

For more information about how to control the screen, see page 15.



Do not disconnect the power adaptor from the device while applications are running. Doing so may cause malfunctions or damage to the device.

Connecting to a smartphone

Connect and register the device to a smartphone. You can upload and download content, add and manage multiple user accounts, use it as a remote control for the screen (TV or monitor), and more. To use this feature, you must download **HomeSync** application from **Samsung Apps** or **Play Store** and install it on your smartphone.



When your smartphone supports the Near Field Communication (NFC) feature, touch the back of your smartphone to the NFC antenna area near the centre of the device to download **HomeSync** application.

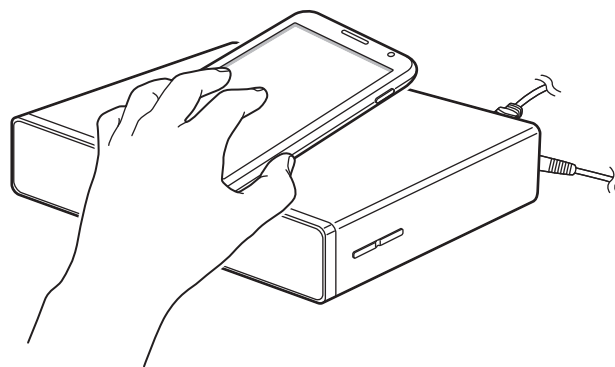
Once the device connects to a smartphone, the device will automatically reconnect to it whenever **HomeSync** application is activated.



For more information about compatible smartphones, refer to www.samsung.com/hk.

When your smartphone supports the NFC feature

- 1 Activate the NFC feature on your smartphone.
- 2 To start **HomeSync** application, touch the back of your smartphone to the NFC antenna area of the device.



- 3 Follow the on-screen instructions.




The NFC antenna area of the smartphone may differ. For more information, refer to the user manual for the smartphone.

When your smartphone does not support the NFC feature

You can connect the device to your smartphone via the Bluetooth feature when the smartphone does not support the NFC feature.



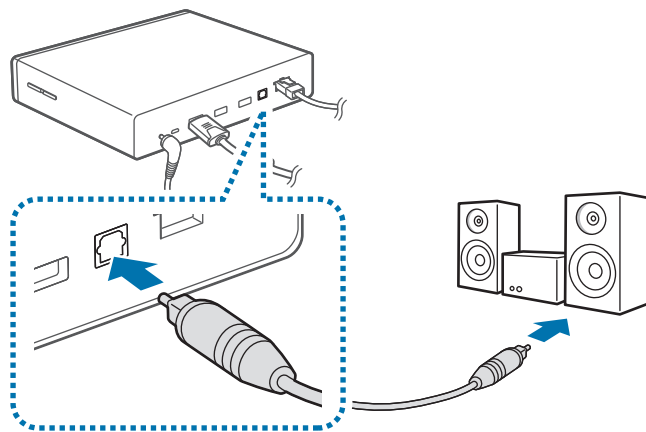
If the Bluetooth feature on your smartphone is off, the Bluetooth feature is turned on automatically when **HomeSync** application launches.

- 1 Tap **HomeSync**.
- 2 Tap  → **Add device**.
- 3 Select the device name from the list of detected devices.
- 4 Follow the on-screen instructions.

Connecting to audio equipment

You can connect the device to audio equipment, such as home theaters.

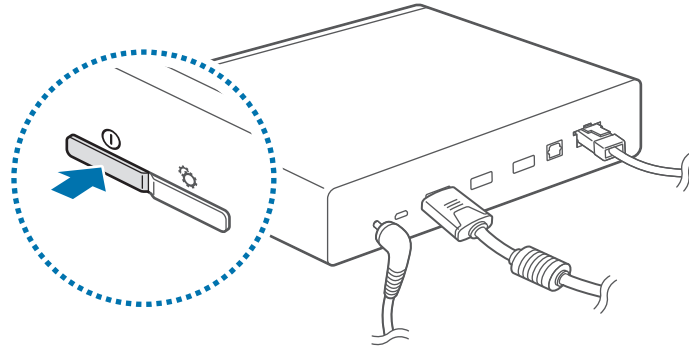
Connect the device to audio equipment using an S/PDIF cable.



You can select a sound output format to use by accessing **Settings** → **Audio output**.

Resetting the device


If your device is frozen or unresponsive, press and hold the Power button for more than 8 seconds.



Resetting may disconnect the device from your smartphone. Connect the device to your smartphone again via the NFC feature or the Bluetooth feature.

Basics

Controlling a screen

Control a screen (TV or monitor) by using your smartphone as a mouse or a remote control. Tap **HomeSync** →  on your smartphone, and then switch to control mode you want.



- Available control modes may vary depending on the smartphone you use.
- You can also connect a mouse to the USB port on the device to control a screen.

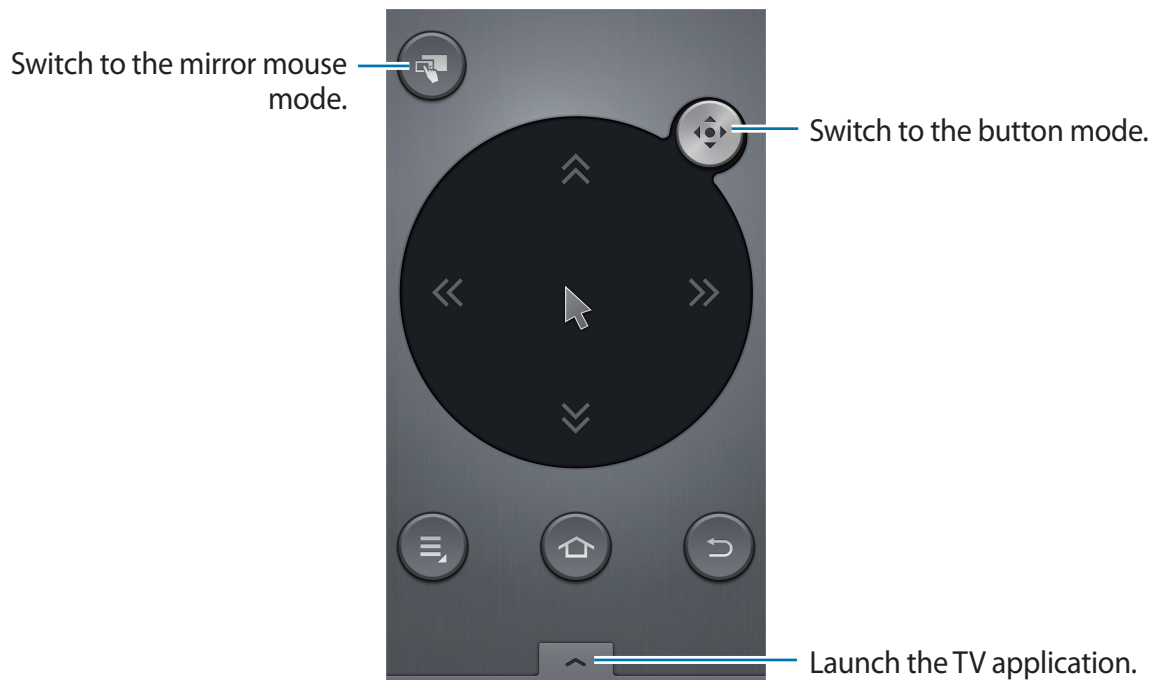
Using the button mode

Touch the button up, down, left, or right to move the blue frame. You can select the focused item by touching **OK**.



Using the cursor mode

Control the screen by touching the control pad and scrolling lists with the scroll cursors.



Using the mirror mouse

Tap .

The monitor screen appears on your smartphone. Use the touch screen on the smartphone to control the monitor screen.

Using the remote mouse

Tap  → **Remote mouse**.

Control the screen by moving the smartphone up, down, left, or right, and then touching the control pad.

To switch to the previous control mode, tap  → **Button mode** or **Cursor mode**.

Controlling the pointer speed

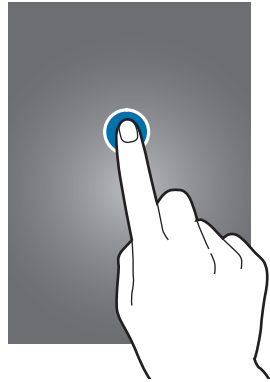
Adjust the pointer speed when using the remote mouse or touch pad.

Tap  → **Pointer speed**. Drag the slider to the left or right and select **OK**.



Using the control pad

Tapping

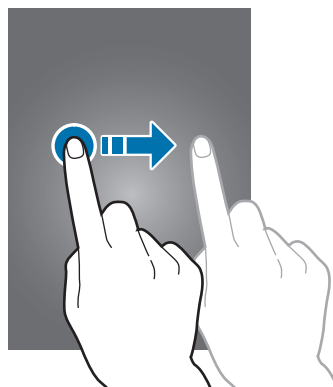
To open an application, to press an on-screen button, or to enter a character using the on-screen keypad, tap it with your finger.



Dragging

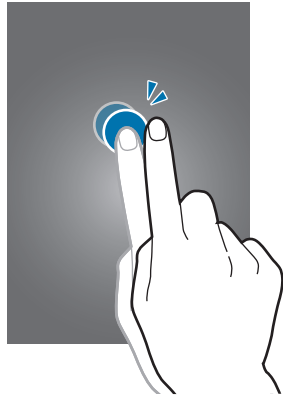
Drag left or right to move to another page when  is changed to  after tapping and holding the control pad.

Drag up or down to scroll through a list when  is changed to  after tapping and holding the control pad.



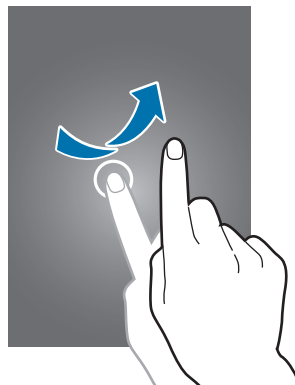
Double-tapping

Double-tap on a webpage or image to zoom into an area. Double-tap again to return.





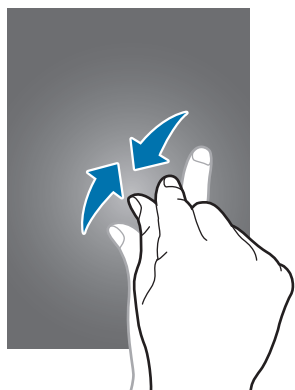
Flicking

Flick left or right on the Home screen or the Applications screen to see another panel. Flick up or down to scroll through a webpage or a list.



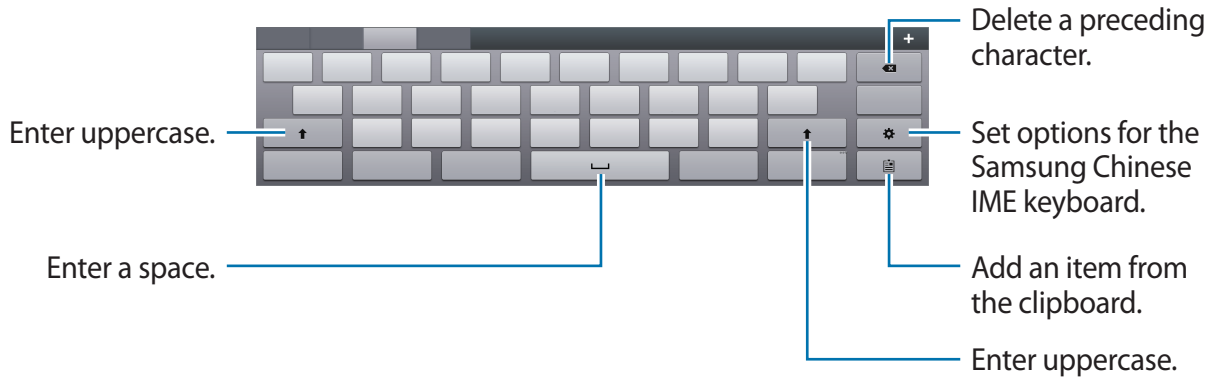
Pinching

Tap and hold the control pad with two fingers, and then spread them apart on a webpage or image to zoom into an area when  is changed to . Pinch to zoom out.



Entering text

To enter text, place the cursor at the text input field, and then use the keypad that appears on the screen.



You can also connect a keyboard to the USB port on the device to enter text.

Home screen

The Home screen provides thumbnails for multimedia files and icons for applications. Select **My content** to preview photos, videos, or music in thumbnail view, or select **Apps** to view icons for applications.

The Home screen have multiple panels. To view other panels, scroll left or right.






The available options may vary depending on the region or service provider.




Buttons


Place the pointer at the bottom of the screen to open the navigation bar.

Button	Function
	<ul style="list-style-type: none"> • Press to open the list of recent applications.
	<ul style="list-style-type: none"> • Press to open the Home screen.
	<ul style="list-style-type: none"> • Press to return to the previous screen.

Opening an application

Open the Applications screen and select an application icon to open. To close the application, press .

Opening from recently-used applications

On the Applications screen, select an application icon under **Recent apps**. Or, press  and select an application icon to open.

Closing an application

When you multi-task by running multiple applications at the same time, some applications may slow down. It may also cause memory shortage.

Close applications not in use to maintain device performance.

Press  → **Task manager**, and then select **End** next to an application to close it.

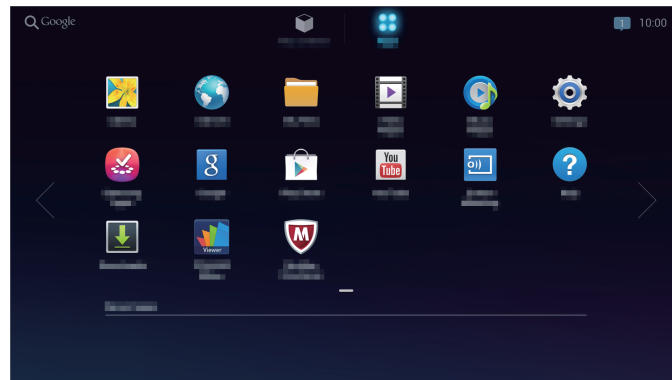
To close all running applications, select **End all**.

Applications screen

The Applications screen displays icons for applications, including any new applications installed. Icons for recently-used applications appear at the bottom of the screen.

On the Home screen, select **Apps**.

When a new panel is added due to newly installed application, move to another panel by dragging right.



Installing applications

Use application stores, such as **Samsung Apps**, to download and install applications.

Setting up accounts

Google applications, such as **Play Store**, require a Google account, and **Samsung Apps** requires a Samsung account. Create Google and Samsung accounts to have the best experience with the device.

Adding accounts

Follow the instructions that appear when opening a Google application without signing in to set up a Google account.


To sign in with or sign up for a Google account, on the Applications screen, select **Settings** → **Add account** → **Google**. After that, select **New** to sign up, or select **Existing**, and then follow onscreen instructions to complete the account setup. More than one Google account can be used on the device.

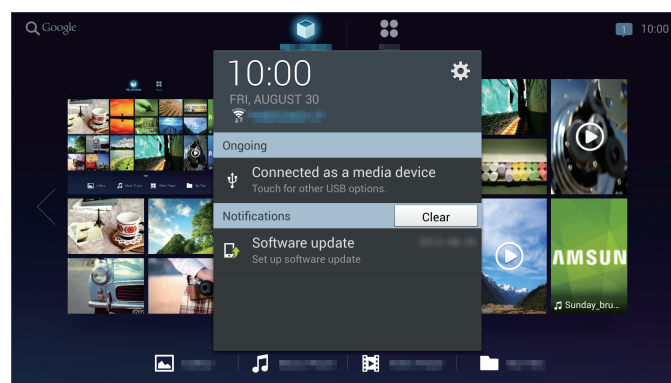
Set up a Samsung account as well.

Removing accounts

On the Applications screen, select **Settings**, select an account name under **Accounts**, select the account to remove, and then select **Remove account**.

Notifications

The notification icon appears in the upper right corner of the screen to report device status and more. Select  to open the notifications panel.



Transferring files

Once HomeSync is activated, photos and videos taken with registered devices (such as smartphones and cameras) are uploaded to the device automatically. You can also connect a USB storage device to transfer media files.



The following file formats are supported by some applications. Some file formats are not supported depending on the version of the device's software or the computer operating system.

- Music: mp3, m4a, 3ga, wma, ogg, oga, aac, wav, and flac
- Image: bmp, gif, jpg, and png
- Video: avi, wmv, asf, flv, mkv, mp4, 3gp, and webm
- Document: doc, docx, dot, dotx, rtf, xls,xlsx, xlt, xlsx, csv, ppt, pptx, pps, ppsx, pot, potx, pdf, hwp, txt, asc, and Password-protected MS office files

Setting automatic uploading

When you connect your smartphone or camera to the device for the first time, a pop-up window for automatic uploading will appear. Tap **Yes**, and then follow the on-screen instructions.

Photos and videos you take with connected smartphones or cameras will be uploaded to the device automatically.

Connecting as a media device

- 1 Connect the device to the computer using the microUSB cable.
- 2 Open My computer folder and double-click the device name.
- 3 Transfer files between the computer and the device.

4 Remove the microUSB cable from the device.




- Do not remove the microUSB cable from the device while transferring files. Doing so may result in the loss of data or damage to your device.
- Do not disconnect the device from a computer while the computer is playing a file stored on your device. Stop playback before disconnecting the device from the computer.
- Your device may not be recognised if you connect it to a USB hub. Connect your device directly to a USB port on a computer.

Setting up user profiles

The administrator can add guests who have Samsung accounts and each guest can access the device.

Adding multiple users

To add multiple guests and manage the accounts, on the Applications screen, select **Settings** → **Member management** → , and then select **OK**. Sign in to your Samsung account. Enter a Samsung account email address of a guest and then select **OK**. The guest who uses **HomeSync** application can access the device.

Or, when a guest requests remote access to the device with an administrator's Samsung account, the administrator is prompted to allow or reject it. Select **Settings** → **Member management**, and then allow or reject the request.



Guest accounts must be registered to the same region as the administrator account.

Setting a private storage

The device provides shared, personal, and private storage. An administrator or each guest can create a secure sector by setting a password for one's private storage.

To set a password for the private storage, tap **HomeSync** → **Private** on your smartphone.

To reset the password for the private storage, access **Settings** → **Member management**, and then select  → **Reset password**.



Esure that your smartphone and the device are within the maximum Bluetooth range (10 m).

Backing up or restoring data

Back up or restore data by connecting an external USB storage device to the USB port (3.0).

Backing up data

On the Applications screen, select **Settings** → **Content backup and restoration** → **Back up**.

Sign in to your Samsung account, select which data to back up, and then select **Start Backup**.



When you back up encrypted data to an external USB storage, the data is decrypted and anyone who uses the external USB storage can see it.

Restoring data

On the Applications screen, select **Settings** → **Content backup and restoration** → **Restore**.

Sign in to your Samsung account, and then select **Restore**.



- When you restore your private data, the data is encrypted again. Do not change files or folders to restore the data.
- To restore your private data on another Homesync device, you must first create a private storage on the device.

Connecting to a Wi-Fi network

Connect the device to a Wi-Fi network to use the Internet or share media files with other devices.

Turning Wi-Fi on and off

On the Applications screen, select **Settings** → **Wi-Fi**, and then drag the **Wi-Fi** switch to the right.

Joining Wi-Fi networks

Select a network from the list of detected Wi-Fi networks, enter a password if necessary, and then select **Connect**. Networks that require a password appear with a lock icon. After the device connects to a Wi-Fi network, the device will automatically connect to it any time it is available.

Adding Wi-Fi networks

If the desired network does not appear in the networks list, select **Add Wi-Fi network** at the bottom of the networks list. Enter the network name in **Network SSID**, select the security type and enter the password if it is not an open network, and then select **Connect**.

Web & network

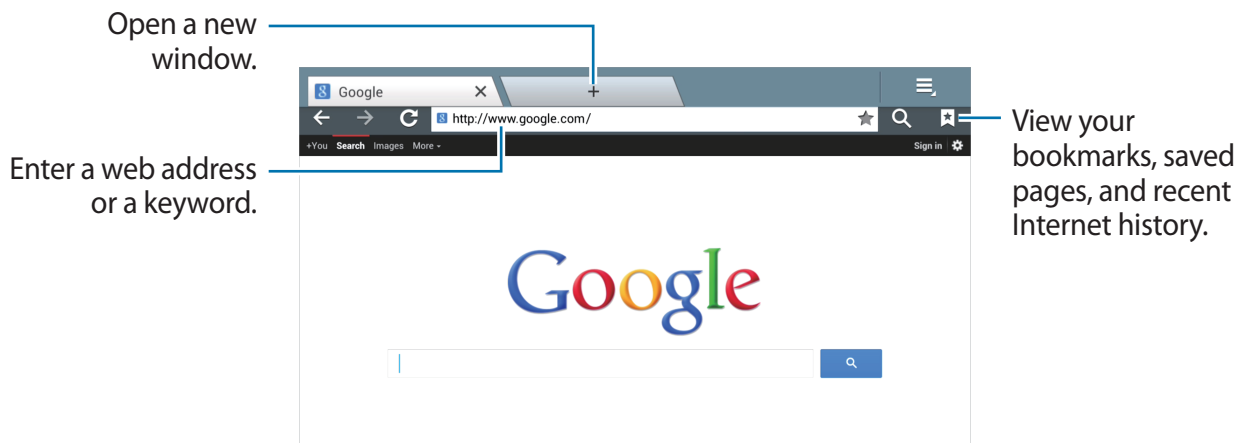
Internet

Use this application to browse the Internet.

Select **Internet** on the Applications screen.

Viewing webpages

Select the address field, enter the web address, and then select **Go**.



Opening a new page

Select **+**, or **☰** → **New tab**.



To go to another webpage, scroll left or right on the title field, and select the title to open it.

Bookmarks

To bookmark the current webpage, select **★**.

To open a bookmarked webpage, select **★**, and then select one.

History

Select  → **Bookmarks** → **History** to open a webpage from the list of recently-visited webpages. To clear the history, select  → **Clear history**.

Select  → **Bookmarks** → **History** → **Most visited** to open a webpage from the list of most visited webpages.

Saved pages


To view saved webpages, select  → **Bookmarks** → **Saved pages**.

Links

Press and hold a link on the webpage to open it in a new page, save, or copy.

To view saved links, select  → **Downloads**.

Sharing webpages

To share a webpage address with others, select  → **Share page**.

Screen Mirroring

Use this application to share your smartphone's display on a connected monitor.



Some smartphones may be incompatible with the device.

Using Screen Mirroring on the device

On the Applications screen, select **Screen Mirroring**.

On your smartphone, activate the screen mirroring feature. Select the device name and select files to share.

Using Screen Mirroring on HomeSync application

On **HomeSync** application, tap  → **Screen Mirroring**.

The screen of connected smartphones or cameras that currently uses **HomeSync** application appears on the monitor screen.

Media

Music Player

Use this application to listen to music.

Select **Music Player** on the Applications screen.

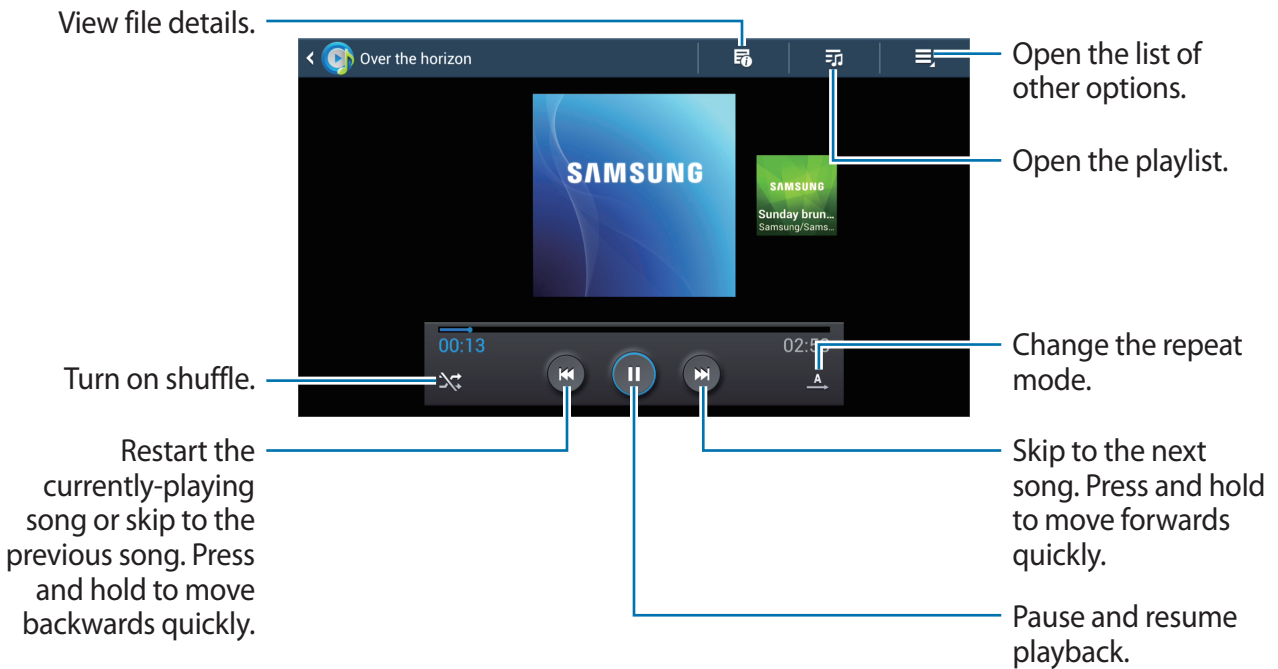


- Some file formats are not supported depending on the device's software version.
- Some files may not play properly depending on the encoding method used.

Playing music

Select a category, and then select a song to play.


Select the album image at the bottom of the screen to open the music player screen.




Creating playlists

Make an own selection of songs.

Select  → **New playlist**, and then enter a title. Select **OK**.

To add the currently-playing song to a playlist, select  → **Add to playlist**.

Playing music by mood

Play music grouped by mood. The playlist is automatically created by the device. When a new song is added, select **Music square** → .

Gallery

Use this application to view images.

Select **Gallery** on the Applications screen.

Viewing images in slideshow

Launching **Gallery** displays available folders. Select a folder to open it.

Press and hold an image, select images to view in slideshow, and then select .

Playing videos

Video files show the  icon on the preview. Select a video to watch it.

Editing images

When viewing an image, select  and use the following functions:

- **Favourite:** Add the image to the favourites.
- **Change player:** Search for devices that have media sharing activated.
- **Share via:** Send the image to others.
- **Rename:** Rename the file.
- **Rotate left:** Rotate anticlockwise.

- **Rotate right:** Rotate clockwise.
- **Crop:** Resize the blue frame to crop and save the image in it.
- **Print:** Print via a USB or Wi-Fi connection. The device is only compatible with some Samsung printers.
- **Details:** Show file details.

Video Player

Use this application to play videos.

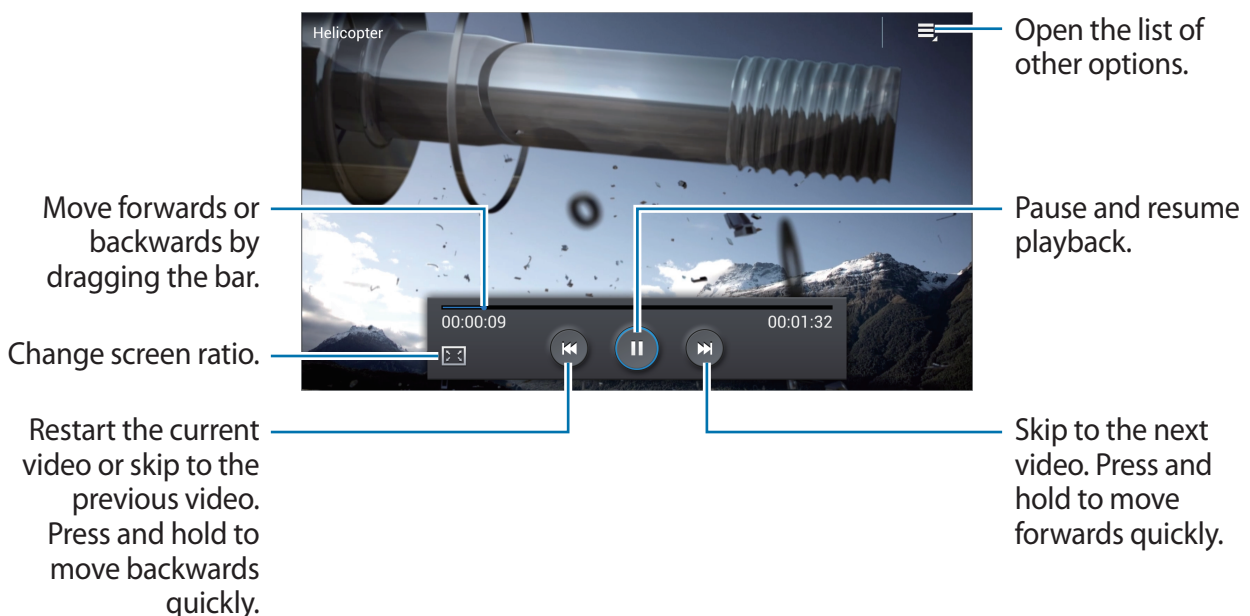
Select **Video Player** on the Applications screen.



- Some file formats are not supported depending on the device's software version.
- Some files may not play properly depending on the encoding method used.

Playing videos

Select a video to play.



YouTube


Use this application to watch videos from the YouTube website.

Select **YouTube** on the Applications screen.



This application may not be available depending on the region or service provider.

Watching videos

Select , and then enter a keyword. Select one of the returned search results to watch a video.

Application & media stores

Play Store

Use this application to purchase and download applications and games that are able to run on the device.

Select **Play Store** on the Applications screen.



This application may not be available depending on the region or service provider.

Installing applications

Browse applications by category, or select  to search with a keyword.


Select an application to view information. To download it, select **Install**. If there is a charge for the application, select the price, and follow on-screen instructions to complete the purchase process.



- When a new version is available for any installed application, an update icon appears at the top of the screen to alert you to the update. Open the notifications panel and select the icon to update the application.
- To install applications that you downloaded from other sources, on the Applications screen, select **Settings** → **Security** → **Unknown sources**.

Uninstalling applications

Uninstall the applications purchased from **Play Store**.

Select  → an application to delete in the list of installed applications, and then select **Uninstall**.

Samsung Apps

Use this application to purchase and download dedicated Samsung applications. For more information, visit www.samsungapps.com.


Select **Samsung Apps** on the Applications screen.



This application may not be available depending on the region or service provider.

Installing applications

Browse applications by category. Select **CATEGORY** to select a category.

To search for an application, select  at the top of the screen, and then enter a keyword in the search field.

Select an application to view information. To download it, select **Download** or **Buy**.



When a new version is available for any installed application, an update icon appears at the top of the screen to alert you to the update. Open the notifications panel and select the icon to update the application.

Utilities

POLARIS Office

Use this application to view documents in various formats, including spreadsheets and presentations.

Select **POLARIS Office** on the Applications screen.



Some functions may not be available, depending on the file type.

Reading documents

Select **Form type**, **Browser**, or **Favourites**, and then select a file to open.

To start a slideshow, select .

To search for a text string in the document, select .

Select , and then use one of the following functions:

Document

- **Zoom In/Out:** Change the view size.
- **Bookmark:** View bookmarks.
- **View Settings:** Change the view mode settings.
- **Read All:** Let the device read all the text aloud.
- **Screen capture:** Capture an image of the screen.
- **View Information:** View information about the file.

Presentation

- **Zoom In/Out:** Change the view size.
- **Slide note:** View memos on slides.
- **Screen capture:** Capture an image of the screen.
- **View Information:** View information about the file.

Spreadsheet

- **Zoom In/Out:** Change the view size.
- **Freeze frame:** Keep the selected row in place.
- **Screen capture:** Capture an image of the screen.
- **View Information:** View information about the file.

Google

Use this application to search not only the Internet, but also applications and their contents on the device as well.

Select **Google** on the Applications screen.

Searching the device

Select the search field, and then enter a keyword. Select one of the suggested keywords that appear.



Search scope

To select what applications to search, select **⋮** → **Settings** → **Phone search**, and then tick the items to search for.

My Files

Use this application to access all kinds of files stored in the device including images, videos, songs, and sound clips.

Select **My Files** on the Applications screen.

Select a folder to open it. To go back to the parent folder, select . To return to the root directory, select .

Downloads

Use this application to see what files are downloaded through the applications.

Select **Downloads** on the Applications screen.

To see the files downloaded from the Internet, select **Internet downloads**, otherwise, select **Other downloads** to see the files downloaded from other applications.

Select a file to open it with an appropriate application.

McAfee VirusScan

Use this application to check for infection and delete it to protect your device from malware and viruses.

Select **McAfee VirusScan** on the Applications screen.

Settings

About Settings

Use this application to configure the device, set application options, and add accounts.

Select **Settings** on the Applications screen.

Scroll up or down for more options.

Wi-Fi

Activate the Wi-Fi feature to connect to a Wi-Fi network and access the Internet or other network devices.

To use options, select .

- **Advanced:** Customise Wi-Fi settings.
- **WPS push button:** Connect to a secured Wi-Fi network with a WPS button.
- **WPS PIN entry:** Connect to a secured Wi-Fi network with a WPS PIN.

Setting Network notification

The device can detect open Wi-Fi networks and display an icon on the status bar to notify when available.

On the Settings screen, select **Wi-Fi** →  → **Advanced** and tick **Network notification** to activate this feature.

Wi-Fi Direct

Wi-Fi Direct connects two devices directly via a Wi-Fi network without requiring an access point.

On the Settings screen, select **Wi-Fi** → **Wi-Fi Direct**.

Bluetooth

Use the Bluetooth feature to connect to Bluetooth-enabled keyboards or mice.

Ethernet

Activate the Ethernet feature to connect to a local area network, the Internet, or other network devices.

Nearby devices

Search for other DLNA-enabled devices on the same Wi-Fi network and allow the devices to share media files.

- **File sharing:** Activate media sharing to allow other DLNA-enabled devices to access media files on your device.
- **Shared contents:** Set to share your content with other devices.
- **Allowed devices list:** View the list of devices that can access your device.
- **Not-allowed devices list:** View the list of devices that are blocked from accessing your device.
- **Download to:** Select a memory location for saving media files.
- **Upload from other devices:** Set to accept uploads from other devices.

Play nearby device content

Specify devices for playing media files from other DLNA-enabled devices on your monitor.

- **Allowed devices list:** View the list of devices that can access your device.
- **Denied device list:** View the list of devices that are blocked from accessing your device.
- **Access Control:** Set whether or not to allow other DLNA-enabled devices to access your device.

Sound

Change settings for various sounds on the device.

- **Volume:** Adjust the volume level for music and videos, system sounds, and notifications.
- **Default notification sound:** Select a ringtone for events, such as incoming messages.

Display

Change the settings for the display.

- **Screen size:** Select a screen aspect ratio to fit the original screen.
- **Daydream:** Select a background type for the screen saver.
- **Font style:** Change the font type for the display text. You can download fonts from Play Store by selecting **Get fonts online**.
- **Font size:** Change the font size for creating or showing items in applications.

Storage

View memory information for your device.



The actual available capacity of the internal memory is less than the specified capacity because the operating system and default applications occupy part of the memory. The available capacity may change when you upgrade the device.

Application manager

View and manage the applications on your device.

Location services

Change settings for location information permissions.

- **Access to my location:** Set to use your current location for Google search and other Google services.
- **Use wireless networks:** Set to use Wi-Fi network for finding the current location.

Lock screen

Change settings for the locked screen.

Member management

Delete the administrator or add guests who have Samsung accounts and manage their accounts.

To add a guest, select .

To delete a guest, select .

To use options, select .

- **Delete administrator:** Delete the account of the administrator.
- **Clear storage:** Delete your private storage.
- **Reset password:** Reset the password for your private storage.



If you change the device, you need the password for your private storage to restore the private storage on the new device.

Security

Change settings for securing the device.

- **Firewall:** Activate an Internet firewall to protect your data from unapproved access.
- **Make passwords visible:** Set the device to display passwords as they are entered.
- **Device administrators:** View device administrators installed on the device. You can allow device administrators to apply new policies to the device.
- **Unknown sources:** Choose to install applications from any source. If not chosen, download applications only from Play Store.
- **Verify apps:** Set this to allow Google to check the application for harmful behaviour before installing it.
- **Trusted credentials:** Use certificates and credentials to ensure secure use of networks.
- **Install from device storage:** Install encrypted certificates stored on the USB storage.
- **Clear credentials:** Erase the credential contents from the device and reset the password.

Language and input

Change the settings for text input. Some options may not be available depending on the selected language.

Language

Select a display language for all menus and applications.

Default

Select a default keyboard type for text input.

Google voice typing

To change the voice input settings, select **Settings** under **Google voice typing**.

- **Choose input languages:** Select input languages for text input.
- **Block offensive words:** Set the device to prevent the device from recognising offensive words in voice inputs.
- **Download offline speech recognition:** Download and install language data for offline voice input.

Samsung Chinese IME

To change the Samsung Chinese IME keyboard settings, select **Settings** under **Samsung Chinese IME**.


- **Input Mode:** Add more keyboard layouts or text input modes to the input selection panel.
- **English Prediction:** Activate predictive text mode to predict English words based on your input and show word suggestions.
- **Sound on keypress:** Set the device to sound when a key is touched.
- **Advanced:**
 - **Space key to input association:** Set the device to enter the highlighted Chinese word when you tap the space bar.
 - **Input auto correction:** Set the device to correct misspelled words automatically.
 - **Auto capitalisation:** Set the device to automatically capitalise the first character after a final punctuation mark, such as a full stop, question mark, or exclamation mark.
 - **Auto-punctuate:** Set the device to insert a full stop when you double-tap the space bar.
 - **Fuzzy Pinyin Input:** Select Fuzzy pinyin pairs so that you can easily enter Chinese characters that are similar in phonetic spelling.
 - **Character preview:** Set the device to display a large image of each character tapped.
- **Reset settings:** Reset Samsung Chinese IME keyboard settings.
- **About:** View version information.

Samsung keyboard

To change the Samsung keyboard settings, select **Settings** under **Samsung keyboard**.

- **Input languages:** Select languages for text input.
- **Predictive text:** Activate predictive text mode to predict words based on your input and show word suggestions. You can also customise the word prediction settings.
- **Continuous input:** Set to enter text by sweeping on the keyboard.
- **Advanced:**
 - **Auto capitalisation:** Set the device to automatically capitalise the first character after a final punctuation mark, such as a full stop, question mark, or exclamation mark.
 - **Auto-spacing:** Set the device to automatically insert a space between words.
 - **Auto-punctuate:** Set the device to insert a full stop when you double-tap the space bar.
 - **Character preview:** Set the device to display a large image of each character tapped.
 - **Key-tap sound:** Set the device to sound when a key is touched.
- **Tutorial:** Learn how to enter text with the Samsung keyboard.
- **Reset settings:** Reset Samsung keyboard settings.

Text-to-speech options

- **Preferred TTS engine:** Select a speech synthesis engine. To change the settings for speech synthesis engines, select .
- **Speech rate:** Select a speed for the text-to-speech feature.
- **Listen to an example:** Listen to the spoken text for an example.

Pointer speed

Adjust the pointer speed for the mouse or trackpad connected to your device.

Content backup and restoration

Back up or restore data by connecting an external USB storage device.

Backup and reset

Change the settings for managing settings and data.

- **Back up my data:** Set to back up settings and application data to the Google server.
- **Backup account:** Set up or edit your Google backup account.
- **Automatic restore:** Set to restore settings and application data when the applications are reinstalled on the device.
- **Factory data reset:** Reset settings to the factory default values and delete all data.

Add account

Add a Google or Samsung account to use.

Mouseover

Set the options for previewing the content or viewing information in pop-up windows when you hold the mouse pointer near an option or button.

Audio output

- **Audio output:** Select a sound output format to use when connecting your device to HDMI devices. Some devices may not support the surround sound setting.

Date and time

Access and alter the following settings to control how the device displays the time and date.

- **Select time zone:** Set the home time zone.
- **Set date:** Set the current date manually.
- **Set time:** Set the current time manually.
- **Use 24-hour format:** Display time in 24-hour format.
- **Select date format:** Select a date format.

Accessibility

Accessibility services are special features for those with certain physical disabilities. Access and alter the following settings to improve accessibility to the device.

- **Services:** Activate an accessibility application you have downloaded, such as Talkback or Kickback, which provide voice, melody, or vibration feedback.
- **Font size:** Change the font size.
- **Text-to-speech options:** Customise settings for speech synthesis engines.
 - **Preferred TTS engine:** Select a speech synthesis engine.
 - **Speech rate:** Select a speed for the text-to-speech feature.
 - **Listen to an example:** Listen to the spoken text for an example.
- **Enhance web accessibility:** Set applications to install web scripts to make their web content more accessible.

About device

Access device information and update device software.

Appendix

Upgrading the device

Software is regularly upgraded to the higher version. Update the device to the latest version for optimised user interface.



The device can be directly upgraded to the latest software by the Firmware Over-The-Air (FOTA) service.

Upgrading over the air (FOTA)

- 1 On the Applications screen, select **Settings**.
- 2 Select **About device**.
- 3 Select **Software update**.
- 4 Select **Update**.
 - When using this function for the first time, follow the on-screen instructions. Select your country and complete the process.
 - The device is automatically connected to the server when there are available updates.

Upgrading with Samsung Kies

1 Install Samsung Kies to the computer.

You can download Samsung Kies from the Samsung website.

2 Launch Samsung Kies.

3 Connect the device to the computer using the USB cable while the device is turned on.

4 Select **Update** when a dialogue box appears.

If the dialogue box does not appear, select the device name → **Basic information** → **Firmware upgrade**.

5 Follow the on-screen instructions to update the device.

When the update process is completed, a completion message will appear on the computer and the device will restart automatically.



- For more information about Samsung Kies, please refer to the Samsung website.
- Some functions of Samsung Kies may differ depending on devices and are subject to change without prior notice.
- Windows XP, Windows Vista, and Windows 7 support Samsung Kies.

Troubleshooting

Nothing appears on the screen.

Ensure that the power adaptor and the HDMI cable are connected properly.

Some parts of screen is cut off.

Follow the on-screen instructions when setting up the device for the first time and select a screen aspect ratio to fit the original screen. Or, access **Settings** → **Display** → **Screen size**.

Music, video, or other media content do not play.

- Ensure that your device supports the file type.
- Some files downloaded from the Internet cannot be played.

The device is dirty.

Wipe your device with a soft towel or an eraser. Using chemicals or detergents may discolor or corrode the outside of the device.

Data stored on the device has been deleted.

Be sure to back up important data to another storage media (for example, Samsung Kies) before resetting the device. Samsung is not responsible for the loss of any data.

A connection is not established when the device is connected to a computer with a microUSB cable.

- You can transfer media files from a computer to the device by connecting the device via Media Transfer Protocol (MTP).
- If you are a Windows XP user, ensure that you have Windows XP Service Pack 3 or higher installed on your computer.
- Ensure that you have Samsung Kies 2.0 or Windows Media Player 10 or higher installed on your computer.

A network connection is not established when the LAN cable is connected to the device.

If you need to use a static IP, configure settings for the static IP by accessing **Settings** → **Ethernet** → **Configure Ethernet device**.

Safety information

To prevent injury to yourself and others or damage to your device, read the safety information about your device before using the device. Some content may be not applicable to your device.



Warning

Failure to comply with safety warnings and regulations can cause serious injury or death

Do not use damaged power cords or plugs, or loose electrical sockets

Unsecured connections can cause electric shock or fire.

Do not touch the power cord with wet hands or disconnect the power cord by pulling it

Doing so may result in electrocution.

Do not bend or damage the power cord

Doing so may cause electric shock or fire.

Do not touch your device with wet hands

Doing so may cause electric shock.

Use manufacturer-approved accessories and supplies

Using generic accessories or supplies may shorten the life of your device or cause the device to malfunction. They may also cause a fire or cause the device to explode.

Handle and dispose of the device with care

- Never dispose of the device in a fire. Never place the device on or in heating devices, such as microwave ovens, stoves, or radiators.
- Never crush or puncture the device.
- Avoid exposing the device to high external pressure, which can lead to an internal short circuit and overheating.

Protect the device from damage

- Avoid exposing your device to very cold or very hot temperatures.
- Extreme temperatures can damage the device.

Do not store your device near or in heaters, microwaves, hot cooking equipment, or high pressure containers

Your device may overheat and cause a fire.

Do not use or store your device in areas with high concentrations of dust or airborne materials

Dust or foreign materials can cause your device to malfunction and may result in fire or electric shock.

Do not bite or suck the device

- Doing so may damage the device or result in an explosion or fire.
- Children or animals can choke on small parts.
- If children use the device, make sure that they use the device properly.



Caution

Failure to comply with safety cautions and regulations can cause injury or property damage

Do not use your device near other electronic devices

Most electronic devices use radio frequency signals. Your device may interfere with other electronic devices.

Do not use your device in a hospital, on an aircraft, or in an automotive equipment that can be interfered with by radio frequency

- Avoid using your device within a 15 cm range of a pacemaker, if possible, as your device can interfere with the pacemaker.
- If you use medical equipment, contact the equipment manufacturer before using your device to determine whether or not the equipment will be affected by radio frequencies emitted by the device.
- In a hospital, turn off the device and always comply with regulation. The radio frequency emitted by your device may interfere with some medical equipment.

Do not expose the device to heavy smoke or fumes

Doing so may damage the outside of the device or cause it to malfunction.

Do not use your device near devices or apparatuses that emit radio frequencies, such as sound systems or radio towers

Radio frequencies may cause your device to malfunction.

Turn off the device in potentially explosive environments

- Always comply with regulations, instructions and signs in potentially explosive environments.
- Do not store or carry flammable liquids, gases, or explosive materials in the same compartment as the device, its parts, or accessories.

If you notice strange smells or sounds coming from your device, or if you see smoke or liquids leaking from the device, stop using the device immediately and take it to a Samsung Service Centre

Failure to do so may result in fire or explosion.

Care and use your device properly

Keep your device dry

- Humidity and liquids may damage the parts or electronic circuits in your device.
- Do not turn on your device if it is wet. If your device is already on, turn it off (if the device will not turn off, leave it as-is). Then, dry the device with a towel and take it to a service centre.
- Liquids will change the colour of the label that indicates water damage inside the device. Water damage to your device can void your manufacturer's warranty.

Store your device only on flat surfaces

If your device falls, it may be damaged.

Do not store your device in very hot or very cold areas. It is recommended to use your device at temperatures from 5 °C to 35 °C

- Do not store your device in very hot areas such as inside a car in the summertime. Doing so may cause the device to malfunction, result in damage to the device, or cause the device to explode.
- Do not expose your device to direct sunlight for extended periods of time.

Do not place heavy items on the device or place the device on top of other electronic devices

Do not use your device or applications for a while if the device is overheated

Prolonged exposure of your skin to an overheated device may cause low temperature burn symptoms, such as red spots and pigmentation.

Do not drop or cause an impact to the device

Your device may be damaged or may malfunction.

Do not disassemble, modify, or repair your device

- Any changes or modifications to your device can void your manufacturer's warranty. If your device needs servicing, take your device to a Samsung Service Centre.
- Do not disassemble or puncture the device, as this can cause explosion or fire.

When cleaning your device, mind the following

- Wipe your device with a towel or an eraser.
- Do not use chemicals or detergents. Doing so may discolour or corrode the outside the device or may result in electric shock or fire.

Do not use the device for anything other than its intended use

Your device may malfunction.

Allow only qualified personnel to service your device

Allowing unqualified personnel to service your device may result in damage to your device and will void your manufacturer's warranty.

Handle cables with care

- When connecting a cable to your device, make sure that the cable is connected to the proper side.
- Connecting a cable by force or improperly may result in damage to the multipurpose jack or other parts of the device.

Protect your personal data and prevent leakage or misuse of sensitive information

- While using your device, be sure to back up important data. Samsung is not responsible for the loss of any data.
- When disposing of your device, back up all data and then reset your device to prevent misuse of your personal information.
- Carefully read the permissions screen when downloading applications. Be particularly cautious with applications that have access to many functions or to a significant amount of your personal information.
- Check your accounts regularly for unapproved or suspicious use. If you find any sign of misuse of your personal information, contact your service provider to delete or change your account information.
- In the event your device is lost or stolen, change the passwords on your accounts to protect your personal information.
- Avoid using applications from unknown sources.

Do not distribute copyright-protected material

Do not distribute copyright-protected material without the permission of the content owners. Doing this may violate copyright laws. The manufacturer is not liable for any legal issues caused by the user's illegal use of copyrighted material.

Malware and viruses

To protect your device from malware and viruses, follow these usage tips. Failure to do so may result in damages or loss of data that may not be covered by the warranty service

- Do not download unknown applications.
- Do not visit untrusted websites.
- Delete suspicious messages or email from unknown senders.
- Set a password and change it regularly.
- Deactivate wireless features, such as Bluetooth, when not in use.
- If the device behaves abnormally, run an antivirus program to check for infection.
- Run an antivirus program on your device before you launch newly-downloaded applications and files.
- Install antivirus programs on your computer and run them regularly to check for infection.
- Do not edit registry settings or modify the device's operating system.
- Regularly update the device's operating system and anti-virus program.

Keep your data safe

Prevent damage to data stored on the device

- Impacts to the device can cause device malfunctions or damage to data. Avoid causing impacts to the device.
- Turn off the device before transporting it.
- Viruses can damage data. Always keep antivirus programs up to date.
- Do not turn off your device while applications are running. Doing so may damage data stored on the device.
- Always back up your data to another storage device for safekeeping. Samsung is not responsible for the loss of any data.

RF Exposure

General Statement on RF energy

Your device contains a transmitter and a receiver. When it is ON, it receives and transmits RF energy. When you communicate with your device, the system handling your connection controls the power level at which your device transmits.

(!) Body operation

Important safety information regarding radiofrequency radiation (RF) exposure. To ensure compliance with RF exposure guidelines device must be used with a minimum of 20.0 cm antenna separation from the body. Failure to observe these instructions could result in your RF exposure exceeding the relevant guideline or Limits.

Limiting exposure to radio frequency (RF) fields

For individuals concerned about limiting their exposure to RF fields, the World Health Organisation (WHO) provides the advice. Further information on this subject can be obtained from the WHO home page <http://www.who.int/peh-emf>.

Disclaimer

Some content and services accessible through this device belong to third parties and are protected by copyright, patent, trademark and/or other intellectual property laws. Such content and services are provided solely for your personal non-commercial use. You may not use any content or services in a manner that has not been authorised by the content owner or service provider. Without limiting the foregoing, unless expressly authorised by the applicable content owner or service provider, you may not modify, copy, republish, upload, post, transmit, translate, sell, create derivative works, exploit, or distribute in any manner or medium any content or services displayed through this device.

“THIRD PARTY CONTENT AND SERVICES ARE PROVIDED “AS IS.” SAMSUNG DOES NOT WARRANT CONTENT OR SERVICES SO PROVIDED, EITHER EXPRESSLY OR IMPLIEDLY, FOR ANY PURPOSE. SAMSUNG EXPRESSLY DISCLAIMS ANY IMPLIED WARRANTIES, INCLUDING BUT NOT LIMITED TO, WARRANTIES OF MERCHANTABILITY OR FITNESS FOR A PARTICULAR PURPOSE. SAMSUNG DOES NOT GUARANTEE THE ACCURACY, VALIDITY, TIMELINESS, LEGALITY, OR COMPLETENESS OF ANY CONTENT OR SERVICE MADE AVAILABLE THROUGH THIS DEVICE AND UNDER NO CIRCUMSTANCES, INCLUDING NEGLIGENCE, SHALL SAMSUNG BE LIABLE, WHETHER IN CONTRACT OR TORT, FOR ANY DIRECT, INDIRECT, INCIDENTAL, SPECIAL OR CONSEQUENTIAL DAMAGES, ATTORNEY FEES, EXPENSES, OR ANY OTHER DAMAGES ARISING OUT OF, OR IN CONNECTION WITH, ANY INFORMATION CONTAINED IN, OR AS A RESULT OF THE USE OF ANY CONTENT OR SERVICE BY YOU OR ANY THIRD PARTY, EVEN IF ADVISED OF THE POSSIBILITY OF SUCH DAMAGES.”

Third party services may be terminated or interrupted at any time, and Samsung makes no representation or warranty that any content or service will remain available for any period of time. Content and services are transmitted by third parties by means of networks and transmission facilities over which Samsung has no control. Without limiting the generality of this disclaimer, Samsung expressly disclaims any responsibility or liability for any interruption or suspension of any content or service made available through this device.

Samsung is neither responsible nor liable for customer service related to the content and services. Any question or request for service relating to the content or services should be made directly to the respective content and service providers.

Some content may differ from your device depending on the region, service provider, or software version, and is subject to change without prior notice.

